

# COMPOSITE REPORT OF KURT RUSSELL / GOLDIE HAWN

## INTRODUCTION



A well-known saying often ascribed to Aristotle suggests that ‘the whole is greater than the sum of its parts’. In essence this is the nature of the Composite or Combined Chart, in that the alchemical combination of two individuals can create a relationship greater than the two. The secret is in working together to create this possibility. Hence, like the individual birth Chart, the Composite Chart holds the potential for fulfilment and each individual either takes hold of or rejects this potential. In many cases the potential of the Composite Chart never manifests because the individuals involved are not working together to ignite the possibilities of their relationship. It’s also true that not every relationship is a positive one, much as this might be the wish. The Composite Chart can shed light on the true nature of each relationship.

Another way of describing the combined energies expressed in the astrological Composite Chart is by using the word “synergy”. Synergy is the dynamic force that is a result of working together to achieve something greater. The New Oxford Dictionary defines “synergy” as ‘the interactions or co-operation of two or more organisations, substances or other agents to produce a combined effect greater than the sum of their separate effects’. This is the underlying premise of the Combined Chart: that the astrological combination of two horoscopes can generate cosmic alignments more powerful than the individuals separately. The interpretation of a Composite Chart is a means of engaging in this mystery.

Astrologically, a Combined Chart is calculated by taking an average, midpoint or mean amount between two or more horoscopes to generate a single Chart. This single Chart is often referred to as the Composite Chart and takes two or more individuals in relationship and produces a single Composite horoscope to represent the soul or nature of the relationship. This technique can be useful in ascertaining patterns, challenges and timing in the relationship itself. However, it does not describe each individual’s relationship needs. For instance a Combined Chart may describe an intense synergy of two people. What happens when only one of the two people wishes for intensity? Conflict may occur or the relationship may simply dissolve. This report is intended by the authors to describe the potential of each combined duo, the alchemy. The choice of whether to pursue the “gold” in each relationship remains an individual one.

## THE HEART OF YOUR RELATIONSHIP



“Hear my soul speak. Of the very instant that I saw you, Did my heart fly at your service” -- William Shakespeare, The Tempest.

### The Sun

There is only one Sun in our Solar System and it is the central focus. In every relationship there are two, as each person brings their own Sun into the partnership. This might generate too much heat in the relationship unless a way is found to moderate and focus the intensity. This is the nature of the Composite Sun which blends the two temperaments and shifts the centre of gravity away from an individual, placing its centre of attention on the relationship. As a couple begins to forge their commitment to the relationship, the focus shifts from ‘I’ to ‘We’ and from individuality towards connection. At the heart of every relationship is the central point which keeps the relationship alive and radiant. This is the Composite Sun.

As an image, the Composite Sun is the heart of the relationship, the planetary organ which provides the nutrients and life force to the relationship. It symbolises how the relationship remains vital and how the couple can be more animated and lively. The Sun is also a symbol of identity and represents what is unique and especially characteristic of the relationship. It symbolizes ideas and goals that are important to recognize for the wellbeing of those involved. As the heart centre of the Chart it reveals the essence and purpose of the relationship. The encompassing question might be: ‘for what purpose has this relationship been created?’ On a more pragmatic level it suggests factors that are important to identify as well as core issues in the relationship. The house position of the Sun will shine light on what areas are of interest and importance to the couple while aspects to the Sun highlight challenges to the vitality and resilience of the relationship identifying other energies that need to be acknowledged in the relationship.

As an image of father or authority the Composite Sun also suggests how the relationship is cultivated and promoted. Therefore it is an important image for any couple to acknowledge, as participation with this energetic quality develops the heart muscle of the relationship. However, like all Composite planets, there is often an irony in the quality of the Composite Sun which is important to reiterate. The Composite Sun is often at odds with one or both partner’s Sun signs. For instance a Sun in Sagittarius involved with a Sun in Aquarius may have their Composite Sun in Capricorn. As individuals their mutual recognition of freedom and wider vistas may need to find a more conservative focus in their relationship. When a couple locates their Composite Sun their relationship shines; therefore the house of the Composite Sun will suggest where the couple might metaphorically find more sunshine.

### The Sun is in the 10th House

Life is unlikely to be quite the same after the two of you have combined forces. In other words this is a life-changing

association. Once you meet and connect then both of your lives move in a different direction. Whether this is a positive or negative direction depends much on other aspects of your Astrology. However, you can be assured that you learn much from your experiences together. This combination can indicate a professional association, as much as a personal one. Either way it is a powerful one. You come together for a purpose. This could be a professional project, a marriage that propels the two of you into the public eye, or a significant role in a public organization. Together you are noticed. If you enjoy living life in the limelight then this is the union for you. However, if you are a private person then you have difficulty coming to terms with the very public nature of this relationship.

### The Sun is Conjunct Venus

The combination of these two Cosmic entities is a significant indicator of love, although not necessarily sexual desire. The attraction is strong. You feel drawn to each other, but other astrological aspects of your Combined Charts will show whether or not this is a sexual attraction or platonic affection. Either way you enjoy each other's company, sharing a common sense of pleasure and this augurs well for marriage, friendship, business and family relations. If you are considering, or are involved in, a romantic union, then this could accentuate sexual desires, however; it can also mean that you share an interest in the arts, fashion, money or another congenial activity. In some cases a strong connection between the Sun and the planet of love can indicate a desire to share investments, or a common sense of morals. One or both of you feel that your association is a social or monetary boon, adding value to your respective lives. This is an ideal combination if you are considering entering into marriage, or if you are already married, as you both feel at ease. You are easily affectionate, warm and friendly, knowing how to give each other pleasurable experiences. You enjoy the same social outings, and friends enjoy your company. As a couple you receive more social invitations than you may on your own. Therefore you delight in the company of your loved ones. Dancing, shopping, dinner parties, and special occasions of any kind are all on your calendar. You can gain much joy from this association.

## THE SOUL OF YOUR RELATIONSHIP



“The more connections you and your lover make, not just between your bodies, but between your minds, your hearts, and your souls, the more you will strengthen the fabric of your relationship, and the more real moments you will experience together.” -- Author, Barbara De Angelis

### The Moon

As the indication of attachment and the barometer of emotional security, the Moon is especially important in the Composite Charts of dependants, like mother-child relationships, couples with children and/or long-term committed partners living together or even flat mates. In your relationship, the Composite Moon's House position suggests where you both might build the foundations for your emotional wellbeing and where you share in the shelter of each other. Your Composite Moon signifies the emotional comfort levels in your relationship and what is needed to help secure your relationship. It is where you find the feelings of belonging and even the atmosphere and ambience needed in your home and private spaces to help nurture and grow your relationship together. The Composite Moon represents the conditions that help you both to feel at home. For instance, are there many moves? a permanent address? Or could you live interstate or overseas? The Moon is instinctual; in your Natal Charts it suggests the habits and familial themes you both bring into the relationship, but in the Composite Chart it suggests the innate patterns and rituals that are natural to your relationship. Do you fit together easily, ride the ups and downs of life together or does the relationship falter at times of stress and difficulty? Is the relationship familiar and safe? These are reflective questions addressed by your Composite Moon

The Moon reflects the many aspects of living in rhythm together. In a particular House it describes what areas of life are necessary to cultivate in order that you both feel safe and secure in your relationship. By astrological Aspect it suggests other forces that challenge and strengthen the security of the relationship. Ultimately the Moon is about emotional security and safety and its position in the Composite Chart addresses these levels of your relationship.

### The Moon is in the 4th House

With your Composite Moon in the 4th House, feeling safe and having a place to belong is important. So is family. The Composite Chart maps out the song lines of your life together; therefore it suggests that family begins in your relationship. Emotional security and safety depends upon the preservation, maintenance and support of your relationship. For some that might be a more traditional image, for others, an unorthodox one. It does not really matter what the picture looks like, more what supports it from underneath. And what builds a strong base is your innermost emotional life, the rituals of being together at home, the task of creating a hearth and the joys of homemaking. Home is wherever the relationship feels safe; it does not need to be fixed to one spot but begins with feeling at home with each other, in the shelter of each other's care. There is depth to your relationship and creating emotional security and a home base together brings meaning and soul to your lives.

Having said that, it is also important to point out that together you will be good at locating property and improving the value of real estate. Therefore property, where to buy and what is important, but remember what is most important is that the place you have is the outer image of your inner secure nest. Together it is important to recognise the boundaries between home and career, the house and the business and the household and the workplace. The imprints of each of your family of origins may have left a mark; therefore it might be liberating to reflect on each one's family roots and your backgrounds to see how you are now in the position of creating a new family tree. It is important to clarify your needs, responsibilities and expectations around both your family of origin and your family of choice. Do not underestimate the importance of family and their connections to your relationship; however, it is also imperative to recognise that it is your relationship that needs nurturing first and foremost, then you will be in a better position to take care of others. The Composite moon invites you to create a warm and sheltering nest together.

### The Moon is Opposite Jupiter

In your Composite Chart the Moon is in contact with Jupiter, the largest of the planets in our Solar System and one who has earned the astrological reputation of being lucky, blessed and bestowing fortune. While a blessing from Jupiter sounds as if it is providential, in practice you are challenged to create your fortune by participating with the chances presented to you as a couple. There may be social and educational opportunities to take advantage of, but to follow these dreams you need to trust and have faith in each other and be supportive and fully committed to sustaining your shared ventures. As a couple you are challenged to find your sense of belonging and security in the world beyond what has been familiar and routine for you both. As Jupiter encourages travel, learning and cross cultural experiences, opportunities to explore these may arise as your relationship develops.

The solid base for your partnership is found through your mutual beliefs and faith in each other and the divine. While you need not ascribe to orthodox or traditional religious dogma, you need to shape a philosophy of life together, one that allows you to feel free and secure enough to take advantage of what is offered to you. Feeling secure does not mean staying in your well-known household comfort zone, but reaching beyond into a world never experienced by either of you. The alchemy of being together creates new dimensions to explore and possibilities beyond what you would have encountered on your own. Your relationship may already have cross cultural flavours and it would be good to discover these together. Imagine what it would be like to live overseas or somewhere beyond what is familiar. What would it be like to pursue your educational dreams with the support of your partner and your relationship? As a team you find your place to belong through your quests and questions; therefore it is always wise as a couple to reach out beyond the everydayness of the lives you lived before you crossed paths with one another. Whatever the nature of your relationship, you are called to expand your horizons together. Your safety net is in your mutual commitment to do this as a team.

## COMMUNING AND CONVERSING



“I know no ways to mince it in love, but directly to say ‘I love you’.” -- William Shakespeare, Henry V

### Mercury

Mercury moves faster than any other planet in our solar system; therefore the ancients likened it to their many-faced and fleet-footed god Mercury. Similarly, the alchemists named the element known for its quickness of movement after him. Mythic Mercury had multifarious roles as a guide, boundary-crosser, the guardian of flocks and the shepherd of dreams, the messenger god, charmer, trickster, the god of commerce, healer and guide. You might have felt his presence when you and your partner crossed paths. Where there’s a trick, a chance meeting, sleight of hand or a hint of magic, Mercury is somewhere nearby. Astrologically Mercury is associated with the process of learning, objectifying thoughts, communicating, sharing ideas and making conversation. It rules two signs, Gemini and Virgo, which reflect the duality and dexterity of Mercury’s approach to the schoolroom of life. Mercury is never static, always in motion and it is a priority when comparing horoscopes, for without adequate communication and interchange a relationship can falter and ultimately fail. Composite Mercury describes the intellectual aspect of your partnership; it is the meeting of minds and your ability to both brainstorm together and mutually discuss important issues.

For the alchemy to have effect in your relationship both communicating and listening are important. Each of you will bring your own ways of thinking into the conversation; therefore whether you exchange a few words or many, what is important is that you each remain connected to the dialogue. We have forged the way we learn and listen earlier in life and if we habitually respond to a tone in the voice, body language or facial expressions from these entrenched patterns we might miss a great discussion. The Composite Mercury shows your tête-à-tête as a couple, the natural lines of communication and conversation as a duo.

In the Composite Chart the aspects to Mercury reveal the lines of communication natural to your relationship. Aspects are important as the planets in aspect to Mercury influence the nature of communication and the feelings of being heard and understood. Its house position tells us about the areas of life where communication for your relationship is natural and most effective, where you learn and communicate together and what skills you might develop and draw on to improve your communication. Basically Mercury in the Composite Chart is your language as a couple, how you speak and converse together, the ideas that you share as one, your joint understanding or the disagreements that you need to focus on. When addressing Mercury in the Composite Chart, the astrologer is concerned with the how the ideas, communication, language and plans of the relationship can be effectively shared and understood. Being dualistic by nature and willing to see both sides the archetype of Mercury is skilful at relating. How you honour Mercury energetically in your relationship is through communication, movement, humour and the expression of ideas.

### Mercury is in the 11th House



Mercury in the 11th house of your Composite Chart suggests that the two of you could be the best of friends as you discover that as a couple you have the same intellectual response to life or at least are moving in the same direction together. This might not have been apparent at the beginning, as you may have felt more like rivals than friends. Since you've been together you've found out how to turn a rival into an ally. Now you can share the similar things in life, rather than compete for them. As a team you will continually be discussing and discovering the world around you. Freedoms and rights are important and together you've come to realise how political and passionate you both are about human rights and democratic processes. Therefore you might find yourselves involved in community projects, animal liberation, welfare concerns and/or a multitude of collective issues. As a team you're also dynamic communicators, discussing the world news, debating political issues and protesting against injustices. You're an intellectual match and as a couple express your opinions and ideas quite openly.

Hence you're not just the best of friends, but you have a lot of best friends. Socialising becomes an important aspect of your partnership, whether that's community involvement or just hanging out with your dear friends. Together you're stimulating company and your friends know that they will get an opinion from you both about the latest news story or even just the latest football scores. As your relationship grows you value the layer of friendship that supports your being together. You are able to talk openly and support one another in pursuing each one's intellectual and scholastic interests, while also taking an interest in the development of your partner's ideas. Freedom of thought and movement are important and so while there might be gaps and spaces in the time you spend together, you are able to bridge the gap through conversing. Communication is your linking device. So when you are together take the time to converse, read a book to each other or try the crossword puzzle.

### Mercury is Conjunct Venus

When Mercury combines with Venus in your Composite Chart, the mutual question is how much do you value communication and discourse in your relationship? Are you intellectually suited and how do you discover what mutually inspires and interests you? How love and connection is conveyed is important to you both. Therefore, the need to express the language of love, share the sense of beauty or converse about shared values is fundamental to your relationship. Companionship is at the heart of your relationship, whether that is sharing the love of the road, the fondness of literature or an opinionated debate. Trickster Mercury makes sure there are enough twists and turns to keep the relationship stimulating.

There might be a sibling story surrounding your relationship, whether that is in your family's histories or maybe it is just that you value your relationship as if it were a sibling one. At the heart of your relationship is a close connection, one that can be expressed through communication of all sorts, whether that is letter writing, texting or communing. Virginia Woolf and Vita Sackville-West left us a gift of beautiful letters intimately written between them, a legacy of their Composite Venus-Mercury in Pisces in the 12th house! Together you both can participate in a valuable legacy of sharing and communicating love.

### Mercury is Trine Mars

Inherent in your relationship are themes that may surround rivalry, anger or competition; themes that arise in all equal relationships. Perhaps in your relationship these might arise when you are not feeling equal. What is important is to recognize them and discuss them when they do arise. You both need to feel free enough to be impatient, annoyed, frustrated, even angry. In the context of your relationship you both need to speak your minds. Sometimes that may feel sharp or cutting, but underlying the awkward communication is the desire to be connected. In partnership it might be just stating what is not being said. And often what is not being said is obvious: 'Yes, there is an elephant in the room.'

Together you make a great debating team. You can bounce off each other well and as one mind, you are agile and alert. Therefore you come up with great ideas together so no sense holding back on these. They need to be expressed, tested and lived. Think of it like living inside an Italian movie set with lots of gesticulating, yelling, emoting, talking, loving and laughing.

## Mercury is Sesquisquare Uranus

When a non-traditional, or slower-moving planet, aspects a traditional, or faster-moving one, it brings an influx of new and innovative images and influences. In your Combined Chart this is the case with Uranus and Mercury, which produce fresh and novel ways of thinking about your relationship and interaction together. As a couple you think outside the square and have a more novel view of life and relationships than your friends or other members of your family do. Therefore it is important to mutually be supportive of your unconventional beliefs and unique opinions. You are excited about the possibilities that arise from your partnership, but are challenged to find ways of exploring these without exhausting or wearing yourselves out in the process.

Underpinning your relationship is a kinship, albeit an uncommon one, but nonetheless vibrant and friendly. In fact you are good mates and friends which you discover through exploring life together. You need to give each other a lot of space to explore and discover new things independently as well when needed. Therefore you need to work on building the security in your friendship and relationship enough to let the other have their space if need be. Together you are interested in the unusual, the unexplored and the unique, and can jointly discuss, experiment and learn about these interests together. Without exploring this exciting and stimulating characteristic of your relationship, you leave an important aspect of your bond abandoned and bereft. It is important not to be ambivalent about your connection, especially when it lacks excitement, but find ways of reconnecting to the high spirits that underpin your union. Just begin a conversation, discuss a controversial news item or explore your ideas about quantum physics or astrology, then you will light the spark that animates your relationship. You need to find excitement in the diversity of your ideas and in your mutual interest in the world beyond.

## Mercury is Trine Neptune

When a non-traditional, or slower-moving planet, aspects a traditional, or faster-moving one, it brings an influx of novel and creative images and influences with it. In your Combined Chart this is the case with Neptune and Mercury, which produce imaginative and inspired ways of thinking about your relationship and interaction together. As a couple you illuminate the spiritual, artistic and creative realms, which are situated at the heart of your companionship. Therefore it is beneficial for your relationship to discover your creative path together, whether than be through the joys of learning a new craft, watching your favourite videos, participating in spiritual endeavours or having your own private book club. Your relationship comes alive when you share music, art and images together, discuss the finer things in life, or mutually marvel at the wonder of life.

Yes together you can be highly idealistic. That's why a cautionary note about the way you communicate with each other is essential, as you may gloss over your difficulties by either not discussing the issue or denying its impact. A helpful way to dodge the difficulty is to forget. Unfortunately the forgetting can morph into apathy, leaving your relationship at sea. Rudyard Kipling likened words to the most powerful of drugs, an interesting turn of phrase for your relationship since it is very important for you both to be as clear and lucid as you can be about significant issues. Therefore it is vital to recognize that confrontation and addressing contentious issues may be difficult. How can you imagine ways to be creative with your disagreements without dampening your dreams? One way is returning to the ideals, beliefs and visions that brought you together and start again to mutually discover why you may have wandered off course. But what always revitalizes your connection is your mutual participation in the spiritual and the more profound aspects of your life.

## Mercury is Opposite Pluto

In myth, one of the gifts given to Mercury was his exclusive role as the leader of souls in and out of the underworld, the domain of Pluto. Given that these planets Mercury and Pluto are in aspect in your combined chart, this mythic image resonates with the challenges inherent in your relationship. Together you are called to confront the challenges that arise because of your merger by being mutual supportive and honest. You build trust in each other and your relationship through the integrity and sincerity you each bring to your altercations. This aspect suggests a deep and intense connection, which includes the facility to address what may appear negative or difficult, as well as discuss



the more profound, perhaps taboo, layers of life. Therefore it is important to know that your relationship may constellate what has been previously hidden or unknown, uncovering what is concealed in order to bring it back to conscious life. This powerful amalgam not only challenges your authenticity as a couple, but also those with whom you are mutually engaged. Aldous Huxley once referred to words being like X-rays. When used properly they could pierce through anything, an important reminder of the power of words and their impact. Together you have this capacity to use words and language to influence and pierce through things; therefore it is important to be mindful of this attribute.

In this way your relationship is highly therapeutic, as together you have the capacity to discuss and reflect on the past and let that go. When the past presents itself, it is always best to be as open and authentic with each other as possible since integrity and truthfulness are the hallmarks of your interaction. Secrets held back from each other undermine your connection and may well become apparent anyway. Therefore your relationship is a challenge to each of you about what needs to be shared and what needs to be kept private. Underpinning your union is a deep bond forged by honouring and respecting each other's privacy and confidentiality. As a team you can discuss and let go of your losses, but you both are able to recreate and reconstruct your resources after the loss. This transformative aspect of your relationship is not only helpful psychologically, but also materially in your teamwork when investing your resources, renovating a home or overhauling a business.

## LOVE AND DESIRES



“Hear my soul speak:  
The very instant that I saw you, did  
My heart fly to your service.” -- William Shakespeare, *The Tempest*

### Venus

Venus is the Goddess of Love. Therefore her placement in a Combined Chart is one of the key indicators of a love relationship, depending on where she resides. This benevolent goddess also shows us where a partnership is happiest whether it is a love bond, business partnerships, friendship, or family tie. What do you enjoy doing together? Where can you find your pleasure, alleviate the hardships of life and find solace in each other? Ardour can be sexual and based in love, but it can also be a shared passion for cause, activity, interest or making money. If the planet Venus is well placed in a Combined Chart then a couple can enjoy sharing mutual interests and desires. However, if there is some astrological affliction you may have difficulty satisfying each other's desires. In other words this is a vital planet when it comes to assessing the success, or otherwise, of any relationship. You are most happy when you remember the saying by author Jean Anouilh, 'Love is, above all else, the gift of oneself.'

### Venus is in the 11th House

You are friends first and foremost. No matter whether this is an intimate love bond, a professional association or a family member, this placement of the planet of love indicates that you share common interests and enjoy each other's company. A friendship is likely to flourish no matter what else does. Business relations also benefit from this association. If other astrological indicators favour a romantic partnership, then friendship is likely to be a prominent component. It is possible that other astrological aspects afflict your Combined Venus meaning that you experience conflict over each other's social status. Perhaps your friends disagree with your romantic bond. However, all being well you are likely to share a common social life, rich with many and varied friends. It is possible that one or both of you are propelled into a higher echelon of society through this relationship. Even so together you enjoy your network, knowing that your own bonds of friendship are strong. You are comrades, perhaps even best friends. Money matters are likely to flourish as you enjoy networking, involving others in your hopes, wishes and dreams. It is also possible that you join forces to support a much-loved cause, charity or social group. It is important that you continue to nourish the seeds of friendship, rather than take each other for granted. Therefore it is also important that you create some spaces in your togetherness. Common interests, passions and deeds can be enjoyed much more if you also make time for activities close to your own hearts.

### Venus is Trine Mars

This is the ideal combination for a creative and productive partnership. You are likely to feel at ease in each other's company, and may also feel attracted on a sexual level. Love and sex combine easily in this union, although you do

need to be wary of taking each other for granted. If you consciously keep the sexual and romantic spark in your relationship then you are likely to enjoy a strong and natural attraction. It is also possible that this partnership is not sexual, but rather a joining of forces for creative purposes. Professionally you could work together on an artistic project, designing or creating something that brings out the best in both of you. However, if you are free to explore a sexual union then this is likely to be a natural and enjoyable side to your relationship.

## Mars

Mars's character is more individualistic, competitive and combative, rather than other-orientated and co-operative. Mars represents the yang, masculine, outer-directed polarity while Venus holds the yin, and feminine, inner-directed pole of relating. In the Composite Chart Mars suggests where a couple might need to focus energy, apply will and assert desires. Astrologically Mars symbolizes anger and libido, emotional and sexual expression, and coaches you to reflect on ways your relationship might express these desires more functionally. Mars's domain is a volatile, yet exciting, area and one that needs to be acknowledged and respected in your relationship.

Composite Mars symbolizes the objectives, goals and ambitions of the relationship; therefore, it is wise to consider what this force invites you to aim for as a team. But, as implied, Mars' independent and dynamic force is often more about separation than attachment. To consider Mars in a relational context suggests that when you combine your energies you can act in a potent and forceful manner to strive for what you want. Therefore, in a Composite Chart, harnessing Mars empowers you both to strive for what you want to achieve together.

## Mars is in the 3rd House

Mars symbolises your desires in your relationship. In any union there are desires and needs. Needs are non-negotiable. Desires or "wants" can be negotiated in a healthy relationship. The stronger your sense of self the better you are able to negotiate from a position of clarity and compromise. Mars in a Composite Chart shows where your union is likely to experience conflict of desires. When you are in sync then all is well. When one of you challenges the status quo then two variant positions needs to be blended in agreement in order for your bond to strengthen. Your placement of Composite Mars in the 3rd House indicates a relationship where communication is a key factor, particularly when it comes to neighbours, siblings and extended family. Together you expend a lot of time and energy relating to each other's siblings and extended family. As long as you are in agreement about how much time and energy to give to these members then all flows smoothly and you enjoy a rich and mutually satisfying bond. If disagreement occurs then you need to explore conflict management strategies. It is important to avoid taking sides. When the two of you are of one mind then you are a powerful couple. Others listen to what you have to say. As a result you may excel at working together, particularly in a profession that is connected with communication. Working together in media, stationery supplies, transport, sales, training, counselling and neighbourhood groups are some options. You may also enjoy debating topics of interest, researching projects together or simply sparking ideas off each other before pursuing your own interests. When you are together you are likely to be inspired to communicate your ideas to other people. The way that you communicate with each other is important in this union. Therefore you need to choose your words with care. Your natural meeting of the minds does not automatically protect your emotions. In an intimate relationship you have the advantage of the ability to communicate well. However you also need to ensure that you listen to how each other feels.

## GROWTH AND COMMITMENT



“My bounty is as boundless as the sea,  
My love as deep; the more I give to thee,  
The more I have, for both are infinite.” -- William Shakespeare, Romeo and Juliet

### Jupiter

Relationships are a work in progress. The union of two people can never be taken for granted. A relationship is a process, and a constantly changing one. Like a garden relationships need tending. When attended to on a daily basis, a relationship grows and love flourishes, like the plants that thrive weed and pest free in the warm rich soil. Neglected relationships slowly fade away, like the garden in which weeds gradually take over and the plants wilt and die. Other planets in this report indicate the challenges, the work needed and the strengths that can be relied on to foster your bond. The planet Jupiter is a much-welcomed indicator of growth, and natural strengths that can be relied on to naturally encourage and nurture your union. Continuing with the gardening analogy, Composite Jupiter represents the enjoyment that comes from viewing your garden's growth and bounty. This generous planet shows in which areas of your combined lives you are satisfied, rewarded and happy together. This is your story of the easiest path to growth and expansion. The planet Jupiter is your indicator of the gateway to abundance when you are together. If Jupiter is prominently placed in your Composite Chart then you are likely to believe in the bounty of this union. Astrologers believe that a strong placement involves the 1st, 4th, 7th and 10th Houses of your Chart. Even though Jupiter shines positive and expansive rays on one area of your combined lives, you do need to ensure that you do not take this area for granted. Appreciation and gratitude are required for the rewards that your relationship introduces into both of your lives. Keep tending the garden of your relationship and you both flourish.

### Jupiter is in the 10th House

This is a strong placement for the positive planet Jupiter indicating that one way or another is a life-changing relationship. While this can indicate a strong and abundant marriage, it can also be prominent in the Combined Charts of business associates and couples with a noticeable role in society. In marriage you present a united front. Your goals are similar and you actively and positively work to achieve your joint objectives. You are likely to succeed in anything you tackle together. Your only caution is that you do not let success go to your collective heads. Teamwork is vital, not only your own, but recognition of the rewards and efforts of others who have helped you climbed the ladder of success. Together you are likely to attract much assistance, monetary and otherwise. You are also likely to receive public recognition as a couple. This could range from enjoying large gatherings at your anniversaries and other happy events, to receiving awards from official sources for your contribution to your profession or society. You are able to grow and learn from each other, creating memories rather than regrets as you have such a positive approach to this union.

### Saturn

Like Jupiter, Saturn is a social planet and moves through one sign of the Zodiac approximately every 2.5 years. Couples born close to each other may have the same Saturn sign. They will therefore share similar experiences of trends and fads, and also the same internal moral compass regarding laws, rules and what is socially acceptable. In a Composite Chart Saturn indicates the structure and backbone of the relationship, the need for agreed upon rules, regulations and boundaries.

Composite Saturn helps to illustrate the constraints and limits placed on your relationship through social and cultural conditions. As a couple it is helpful for you both to be aware when boundaries are important to you, what areas of your shared life feel restrictive or controlled as well as where insecurities and pressures originate. Saturn is symbolic of the skeleton of your relationship where structure and organization are needed to support your partnership. It suggests what traditions and rules need to be respected. It also points to where rules, a lack of maturity and authority figures may become problematic if relational responsibilities and everyday tasks are not equally shared or well-managed. However, it also illuminates the areas of your shared life where solidity, stability and longevity can be forged. By nature, Saturn represents the outermost limits of what is still within our control and jurisdiction. While it is often experienced as limits, it is the maturing force within the relationship that helps to secure and structure the relationship in the 'real world', bringing lasting success and achievement.

In relationship astrology Saturn is the 'glue' that holds the relationship together; it is commitment. In the Composite Chart it shows in what areas of your life this commitment is necessary to forge and shelter your relationship. However, it also symbolises where stress may occur within the relationship. Yet the nature of Saturn is also highly rewarding, as with hard work and perseverance, rewards and acknowledgement are possible. Therefore Saturn symbolises the area of your life together where hard work, determination, resolution and responsibility pays off.

### Saturn is in the 5th House

There are three ways we might think about Composite Saturn in your 5th House. Firstly, Saturn is the lawmaker, so it is wise to reflect on what rules and enforcement needs to be brought to how you share your creative and erotic life together. Secondly, Composite Saturn suggests where together you can cooperate on building the appropriate boundaries physically, emotionally and psychologically. And thirdly Saturn can symbolize your relational trials, perhaps even its Achilles Heel, so its House position can point us to where these might be located.

Since this sector of your Composite Chart targets the fun, spontaneous and expressive aspects of your relationship, the seriousness of Saturn needs to be considered as how it can best support these features in your partnership. Needless to say the symbols do not fit easily together; metaphorically how do you manage the principle of gravity when trying to support the lighter side of your relationship or entertaining and pleasurable desires. Timing and planning are key, as together you will not be able to feel free enough to enjoy yourselves until the shared duties and responsibilities have been attended to. It is as if pleasure and amusement are rewards for hard work. Perhaps it is important you also schedule leisure time together. The alchemy of Saturn in the Composite 5th House creates a new mode of creativity for you both. One of the tasks of your relationship is to find ways to express yourselves as a team, work on artistic or innovative projects, join in an adventure or take a risk together.

Saturn has its own speed and that is slower than you may want to go. It might be a slow process to beginning to feel uninhibited with one another. Physical playfulness, emotional openness and affection may take its time, so together it is important to honour time and support each other to feel more spontaneous, playful and light-hearted. A wise astrology teacher Isabel Hickey used to say, 'Saturn delays, but does not deny', which is a reminder to be patient and understanding in how you express your love to each other and how your relationship grows over time. The 5th is also the House of children; not always literal children but what you create together. This may be a challenging process for you both, but nonetheless one that helps you become more confident and successful at enjoying your time as a couple.

### Saturn is Sextile Uranus

Your Composite Chart draws the two planets Saturn and Uranus into aspect. Mythologically it is like the battle of

the Titans, two substantial and opposing forces vying for your attention. The Titans were mythic giants, so metaphorically speaking you need to honour this potential divide that may be inherent in your relationship. Astrologically the forces set in opposition are the urge for security and predictability with the impulse for change and adventure. Therefore when it comes to the big decisions in your relationship, be aware that there may be ambivalence or difficulty when choosing which direction to take. At the heart of the dilemma these energies are endeavouring to work together, so honour both. Respect the Saturnian side of the aspect by taking your time, being responsible, considering the option and weighing up the possible outcomes. Value the Uranian part by being open to change and/or taking a risk, disconnecting from what no longer is working, and honouring your ideals and visions. Together you can work your way through the struggle and fears by recognizing that both security and change are possible, not always in opposition.

### Saturn is Semisquare Neptune

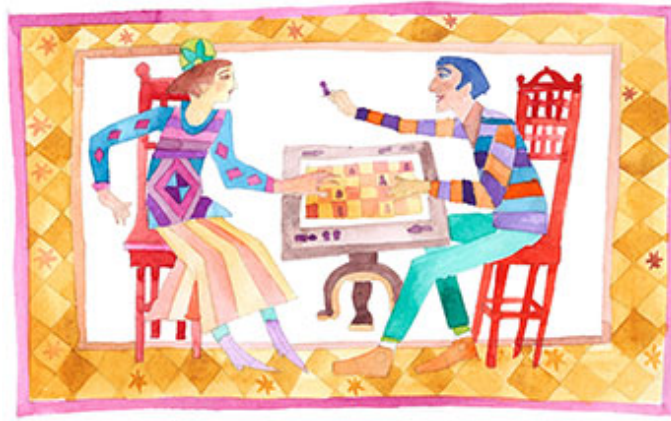
Your Composite Chart draws the two planets Saturn and Neptune into a mutual relationship, one that is not always easy due to their differing archetypal orientation as well as their compromising aspect to each other. Astrologically these archetypes are not well-suited; therefore an intentional effort needs to be made to unite their natural diversity. Their differences are best described by a natural metaphor: Saturn is the mountain, Neptune the sea. Therefore Saturn is fixed, solid, stable and contained, whereas Neptune is fluid, changeable, uncertain and uncontained. How you create a dialogue between and find an optimal way to work with these different approaches to life is your task. Since these life perspectives are opposed, find the appropriate time for each rather than trying to blend or manage them together. For instance identify and acknowledge your dreams and ideals, your mutual creativity and spirituality as well as your fears and suspicions. But realize these are only probabilities, not certainties. To bring your dreams and creativity to life, you need to find the time to work on them, devoting time to build and structure your imagination together. Your fears and suspicions also subside as you find a way to commit to your spiritual and creative life together. Like two dancers you can be creative, fluid and elegant; it just takes lessons and time. The old adage "walk the spiritual path with practical feet" applies well to your partnership.

### Saturn is Square Chiron

Your Composite Chart brings the two planets Saturn and Pluto together in a way that affects your relationship. Mythologically they had a complex relationship since after Saturn fathered Chiron, he abandoned him. These are archetypal themes, threads woven through the larger fabric of life, but motifs nonetheless that are drawn into your relationship. While themes of fathering, abandonment, exile, exclusion or loss of inheritance may be in the atmosphere, in the mythic narrative Chiron's abandonment was his calling. It was this complication that led him to his mentoring and healing vocation. Astrologically the themes of exclusion and marginality may play their role in the alchemy of your partnership, yet we can also consider that this is the incentive for your relationship to find its own unique course. While difficulties and challenges always exist, together this aspect suggests that these also contain relief and comfort as they can guide you in a more soulful direction. Therefore it is important not to allow these feelings to obscure the bigger picture of being together. While the pain is most definitely personal, it has a higher purpose. Together you can find ways to accept feeling marginal or outside the system through acknowledging your spiritual connection. As a team it is important to construct your own spirituality which will support and foster your relationship. Most importantly you can mutually acknowledge that you have found a place to belong.



## INFLUENCES



“Love is begun by time, And time qualifies the spark and fire of it.” -- William Shakespeare, Hamlet

Uranus spends about seven years in each Zodiac Sign. As it passes into each Sign it brings its urge for reform and change along with it. Depending on the nature of your relationship it may be in the same Zodiacal Sign; for instance school mates, siblings, first boyfriends or girlfriends probably share a similar Sign. But wherever it is Uranus is not an energy easily integrated into relationship, as Uranus's urge is to be separate. The more restrictive it feels the more it reacts to find a way to restructure the status quo. Therefore in the Composite Chart Uranus suggest where a couple can find the space and freedom to be themselves, unbound by the pressure to conform.

Simply said Composite Uranus shows where the unusual, extraordinary as well as the rebellious inclinations of each couple might be found. This area suggests where there needs to be less rules and more spontaneity. Astrologically Uranus has a reputation for the unexpected, often the unexplained. Therefore it is wise to be aware of the House position and aspects to Uranus as this may help you to be more prepared for surprise and discoveries together.

### Uranus is in the 3rd House

This is one of the more positive placements for the planet Uranus. It is not a major influence in this sector and so other indicators need to present for a committed partnership. However whatever the nature of your relationship you are likely to enjoy sparkling conversation and witty repartee when together. You are not necessarily of like mind, but it doesn't matter because you enjoy the stimulation of each other's insights. You can easily bounce ideas off each other and may even join a group with an intellectual bent, common interest, or shared cause. Teaching, writing, social media and other such projects may appeal as a joint venture. Originality is the name of the day and you can both be quite the pioneering couple when it comes to any field associated with communications. You may also share a love of languages. Once again you like anything that stimulates your mind and sparks new ways of thinking. One possible challenge with this planet being in the 3rd House of your Combined Chart is if one of you prefers to follow a more logical and traditional train of thought. If this is the case then you may find that arguments and conflict ensue disrupting the flow of communication. However, even if this is the case, you are most likely to agree to disagree. Either way, this union is one that challenges and changes your way of thinking in unexpected ways. You learn much from being together. Sometimes this placement indicates a student and teacher relationship, or a couple working on a joint project that involves inventive thinking and creative ideas.

### Neptune

The Planet Neptune spends 14 years in each Zodiac Sign and therefore its influence is subtle and linked to generations rather than individuals. Nevertheless Neptune is seen by astrologers to be connected to the other world, the unseen world or the one often referred to as the other side of the veil. As such it rules what is invisible, unseen, missing, vague and inarticulate. Only through images and feelings can the true nature of Neptune be expressed.

For a couple in a committed relationship Neptune is where both ideals and disappointments gather. Therefore it is

good to address the ideals, dreams and fantasies that are part of the relationship as well as name any disappointments without blame and judgement. In honouring Neptune the couple can become more aware of any delusions that may erode the foundation of their relationship as well as the dangers of misreading responses or overprotecting insecurities. Neptune in your Composite Chart is where there is sensitivity, sometime helplessness, but this vulnerability is shared so it is not weak but ironically robust and potentially healing. The planetary position may also point to where misunderstandings and taking things for granted may occur. In this place it is always wise to have reality checks about what has been said and what has been agreed upon.

But Composite Neptune is also where you can explore your shared creativity and spirituality.

### Neptune is in the 7th House

Neptune by House is where the imagination that inspires your relationship is located. Here are the dreams that can be dreamt and possibilities that can be probabilities. It is also where shared meaning and understanding can be developed which strengthens and reaffirms the love and compassion of each partner. No matter what other people think or say about your relationship you know that you have met your ideal partner. "Your partner is nothing like you," they say. "So what, opposites attract," you say. "You have nothing in common," they say. "We have love in common," you say. And so it goes. You know the story. You have heard it over and over again. Both of you feel bound to each other no matter what challenges arise on a daily basis. Of course, this alone, is not enough glue to hold the relationship together. Unless you have other strong indicators in your combined relationship Chart, this union is likely to glow brightly but briefly before petering out. However, if commitment is indicated in other way then this can feel like a match made in heavens. The Gods were smiling on you both the day you met. In fact you may have an amazing, almost phantasmagorical story, about the events that led up to your meeting, the unlikelihood of the circumstances and the amazing connection that you felt the moment your eyes met. The story may gain almost mythological proportions over time. These fantasies are important, as long as they also have an anchor in the mundane world. Romance won't put bread on the table, but it will help both of you enjoy the process. Process, more than outcome, is very important in this relationship. You have already discovered that contrast in personalities can bring light and colour. You also know that the connection that you feel is more important than external pressures. Nevertheless those pressures do exist and you also need to be in tune with the reality of your daily situation. You can create some romance, a sense of sublime union, a lot of the time. However, you also need to face realities when they impinge on your fantasies. Dream together, by all means, but make sure that you also have some structure. Otherwise one or both of you may start to feel disillusioned with the partnership, and seek relief elsewhere. When the pressures of daily life impinge on your love union, take some time out at the beach, cinema, theatre, ballet, or some such inspirational past time.

### Neptune is Sextile Pluto

This combination is not a major influence but it is an indicator of the importance for the two of you to act with integrity when together. Any form of dishonesty, no matter seemingly innocent, is likely to undermine the strength of your relationship. You each need to act with the utmost integrity, share your inner most world and trust each other. If this is not possible then you may be well advised to walk away from an intimate bond. Both of you need to feel safe when in each other's arms and lives. If you do then much can be accomplished particularly in areas where others may fear to tread. Knowing that you have each other's backs you are able to walk a true path that empowers both of you and those who cross your path.

### Pluto

As the underworld God, Pluto is focused on what lies underneath the surface, in the unseen world of your relationship. Therefore in the Composite Chart it addresses the issues that may be buried, yet potentially eruptive. It depicts the patterns that are hidden, yet still influence you both, even pressures from the past that haunt the current relationship. On one hand it suggests where the relationship may be drawn into difficulty; yet on the other hand, the character of Pluto also represents the transforming and life-altering experiences that are available to your relationship. There is a soulful side to Pluto as it anchors your relationship in a deeper and more authentic place.

Pluto helps illustrate how the power of your relationship might be best expressed. You can be either empowered or dis-empowered depending on how your relationship is able to handle the voltage and power of the energy. The House position of Composite Pluto might address areas of your relationship where loss and emotional confrontations may be experienced. It also locates the area where your relationship can be rebuilt and reborn through trust and intimacy. Pluto addresses the human experience of loss in relationship, the deepest human emotions, issues of betrayal and emotional control which engage the two souls involved in their relationship in a more intimate and trusting union. Alchemical texts depict the process of submerging two individuals in the cauldron of their relationship. When immersed together, alterations and revelations occur. In the context of your relationship, each of you will begin to become more vulnerable to one another in this area of your life. As well, greater patterns from both your families of origin may begin emerge out of the shadows to be healed. This area of your life together will be profound in its capacity to heal past hurts, encourage authenticity and honesty to bring each of you closer together on a soul level.

Pluto moves slowly through the Zodiac spending the least time in Libra and Scorpio and the longest time in Aries and Taurus. Individuals born within the same generation will generally have the same Pluto Sign, unless born near the cusp when Pluto was changing signs. With the same Pluto Signs, the Composite Pluto will be repeated in that sign. With a considerable age gap two individuals may have differing Pluto signs. What is unique to your relationship is Pluto's House position and its association with other Planets.

### Pluto is in the 5th House

Astrologically the 5th House is generally portrayed as an amusement park or playground. However, Pluto, the planet in your Composite 5th House, is not generally associated with fun. So what might this mean? Serious fun? It is more likely that in your relationship you play and express your affections to each other in private. You might not demonstrate and express the intensity of your relationship in public, preferring this to be private. However, there is a felt passion and warmth that you exude and others feel. Together you make an engaging couple and others are curious about the nature and content of your intimacy. Therefore take note of others' curiosity about your relationship. The power of your love is strong and is felt by others who may try to undermine your trust. As a team you are magnetic and charismatic. Together you express an energy that is attractive to those who are comfortable with the intensity of truth, yet to those who are not so comfortable with themselves your coupling may be a bit intimidating. You might have noticed that when you first got together there were a few minor tremors in your circle of friends. As a team you might notice that now and again you both trigger a few alarm bells in your social circles.

However the transformation that is taking place is on a personal level. Your personalities and the way you express yourselves have been profoundly altered by your relationship. Your relationship is unearthing more confidence and self-expression. Together you are healing your self-images and helping each other to feel more connected and self-assured. Ironically your deep connection is bringing out more of your own faith and confidence in yourself and each of you is becoming more optimistic and faithful about life. The power in your relationship is its restorative potential, a self-healing that occurs the more you love and cherish one another.

## DESTINY AND OPPORTUNITIES



“A heart to love, and in that heart, Courage, to make's love known.”. -- William Shakespeare, MacBeth

Chiron revolves between Saturn and Uranus in our Solar System. In your relationship system you might also imagine it as a bridge between these two energies: one force wants to feel part of the system while the other wants to be outside it. Composite Chiron may be a key to helping you understand where your relationship is not part of the normal scheme of things or where as a couple you feel marginal, possibly excluded. It is the interplay between belonging and disassociating.

Since its discovery in 1977 astrologers have identified Chiron with wounding and healing. The wound is often the feeling of not belonging, while the healing is the acceptance of being an outsider or not feeling significant to the tribe. Therefore, in your Composite Chart Chiron identifies where these feelings are located. Perhaps you, as a couple, feel excluded from your families of origin, neighbourhood or even society, but through your mutual acceptance you begin to find a place to belong through your relationship. Chiron then becomes the healing balm that allows you to feel at home belonging to each other through your commitment.

When the energy of Chiron is adopted by a couple, they will find themselves forging alliances with many different and varied individuals, other couples and groups. As an energy in the relationship Composite Chiron points to the wound that is apparent because of the relationship, but also reveals the path for healing. It also locates where the relationship can find their own space, exclusive of the world and its demands. Therefore it often represents the spiritual hub that unites the couple, a private place of intimacy or a meditative or remedial retreat that brings a sense of restoration and healing. In a way Composite Chiron is the mentor and therapist embedded in the relationship.

### Chiron is in the 8th House

Relationships are delicately balanced at the best of times. A loving relationship offers the opportunity for healing of emotional wounds from the past and personal growth and fulfilment. When two people relate in a tender way then it is possible to provide the greatest opportunities for healing rather than more hurtful experiences. Working through emotionally difficult times is when Chiron is working at its best. At times in relationship, one person may inadvertently trigger the other's hurt feelings. These feelings may be left over from your childhood, or from a previous relationship. Either way your current relationship is an opportunity to relate differently. A loving union provides the chance to let go of the past and experience intimacy and true love now. This placement of Chiron in your Combined Chart means that this relationship is likely to be deep and meaningful. Shared resources, sexual intimacy and metaphysical matters are highlighted. Together you can help each other recognise what is truly valued in your lives. Whether your lessons are painful, or happy, you learn much about money, sex, and sharing. It is possible that this union will result in a business or work that has an esoteric bent. It is also important when Chiron is placed here that you both carefully negotiate, as much as you can, your values when it comes to sharing. For instance do you agree on the type of investments that you want? Do you both want to invest in property or would one of you prefer to rent and put have a large savings account? Another sensitive area is sexuality. The energy of

Chiron can be very healing, but it can also be hurtful. You need to ascertain early in your relationship whether or not you are sexually compatible. If you have conflicting values in this intimate area then you need to be very sensitive to each other's needs. The more that you address any relationship problems early in the relationship the more that you avoid conflict later on. It is important that you both speak your truth, not what you think is expected. Emotional truth will surface sooner or later when Chiron is placed here.

The Lunar Nodes are not planets, but points in space where the orbit of the Sun and Moon intersect. But, unlike the planets their direction through the Zodiac is Retrograde (or backwards moving). Therefore their nature is not bound by time or space in the same way the planets are. Nor are they material or visible in the sky like planets. The word 'karmic' is used in the context of the Nodal Axis to summarize the feelings of familiarity or foreignness, the attraction or repulsion, and the overwhelming sense that the relationship was meant to be. As an abstract construct in the heavens we can consider them to be metaphysical by nature. Whereas planets are the symbols of human instinct, the Lunar Nodes symbolize the spiritual dimension of personal experience. Hence the Lunar Nodes are often likened to the journey across time and space or through different lifetimes.

In your Combined Chart the Nodes assist us to reflect on the purpose and spiritual dimensions of your relationship. The Nodal Axis will fall across a House polarity of your Composite with its northern pole in the House opposite its southern pole, highlighting the environment where destiny plays her role. Since the North and South Node are part of the same system, not separate, the movement between both Nodes in your Combined Chart is like a continuing dance through time. The North Node presents the qualities that need to be intentionally supported and developed in your partnership while the South Node is a point of familiarity, the felt experience and innate recognition of each other, where you feel connected and secure in the larger picture of your relationship. Imagine this House polarity as a crossroads where you jointly encounter the more mystical dimensions of your relationship.

### The North Node is in the 2nd House

Your Nodal pathway stretches across the astrological expanse where resources, income possessions, property and the sharing and distribution of these assets are highlighted. The soul of your relationship brings the complexities of trust, sharing and authentic values to light. On an emotional level this may lead to exposing deeper layers of doubt or suspicion within the relationship; yet, as a couple, when you confront these feelings together with honesty and openness, then the confidence and faith in your relationship becomes deeper. As trust builds, the more resourceful and prosperous you will feel as a couple. Part of the spiritual agenda of your relationship may be to accept that the sharing of emotional wounds and pain can be a healing balm that secures and binds your relationship together. Sharing your resources, being intimate and emotionally and sexually open with each other, leads to physical and financial wellbeing and security.

As a couple you may feel your paths crossed to complete a project or create something stable for yourselves and your family. Part of your agenda may be to invest together in the future through building a firm financial foundation and a secure emotional base. Therefore it becomes imperative as a couple to mutually attend to your capital and assets, as these are a symbolic measure of the emotional and psychological security you have within your relationship. Each couple will have their own image of what financial security looks like, but with this astrological signature it is based on emotional intimacy. As you build your financial future the matter of trust and faith in the relationship continues to be tested. Sharing what is pleasurable, sensual and satisfying is important; therefore it is also essential that the physical and emotional boundaries with others are articulated and understood. A karmic imprint of your relationship suggests that establishing a secure foundation together helps heal feelings of mistrust and lack of value from the past.

### The North Node is Square Mercury

Mercury is at right angles with your Composite Nodal Axis suggesting that his character challenges the direction of your relationship. What might this mean? First of all, Mercury's presence identifies the necessity of movement and change in your relationship and the many different ways and opportunities that this could come about. As a couple you might need to juggle many different tasks or roles; therefore you are challenged to be versatile and open to

changes of direction. We meet Mercury at crossroads, on thresholds and in transitional zones, disguised as the gatekeeper or border guard. For your relationship you need to be mindful of Mercury's presence and that while he heralds change he also opens the door to opportunities. Often these are disguised as his nature is to trick us into change.

Therefore as a couple you may be challenged to go in a direction you had never imagined possible. But also you need to be aware of not misleading yourselves into taking the wrong path. Therefore as a team you are challenged to be open to all possibilities, to discuss them together, work through them and reach a mutual decision. What is most important is to communicate openly as your interchange and sharing is what brings you back to being equal partners on your relationship journey together.



## CONCLUSION



The text in this report has been written by astrologers Stephanie Johnson and Brian Clark.

Stephanie Johnson is a professional astrologer with a passion for seeing clients, writing astrological text and creating quality astrology software. She was a journalist in Australia, England and the USA before becoming a professional astrologer. She is currently the sole director of Esoteric Technologies Pty Ltd, and one of the creators of Solar Fire and Astro Gold. Stephanie is based on the Mornington Peninsula in Victoria, Australia. She is the driving force in the creation of the Solar suite of software and runs her own international consultation business and astrology report writing service. You can find more information at [www.seeingwithstars.net](http://www.seeingwithstars.net)

Brian Clark is the co-founder of the Chiron Centre, now located in WellBeing, a wing of the Abbotsford Convent in Melbourne dedicated to alternative healing therapies. As a consultant astrologer for over 30 years he is deeply interested in astrology from a healing perspective. After a successful four-year teaching program in astrology for over 25 years, Brian has redeveloped the syllabus as a distance learning program ([www.astrosynthesis.com.au](http://www.astrosynthesis.com.au)) leading to the Diploma in Applied Astrology. He has his BA (Hons) and MA in Classics and Archaeology from University of Melbourne. Brian also lectures on myth and conducts tours to sacred sites in Greece through Odyssey. Brian has been honoured with a Life Membership from the Federation of Australian Astrologers (FAA). He is the author of Solar Writer - Vocation and Solar Writer - Kindred Spirits. Previously he and Stephanie Johnson have collaborated on Solar Writer – Goddess.

### About the Artist:

The illustrations have been created by artist, illustrator and teacher, Janet Bridgland. Janet divides her time between her home and garden in Bridgewater, overlooking the Heysen Trail, and working in the second hand bookshop Back Pages Books, in cosmopolitan Adelaide where she sells books, paints and teaches water colour painting and drawing. Her beautiful illustrative work can be discovered at: [www.janetbridgland.com.au](http://www.janetbridgland.com.au)

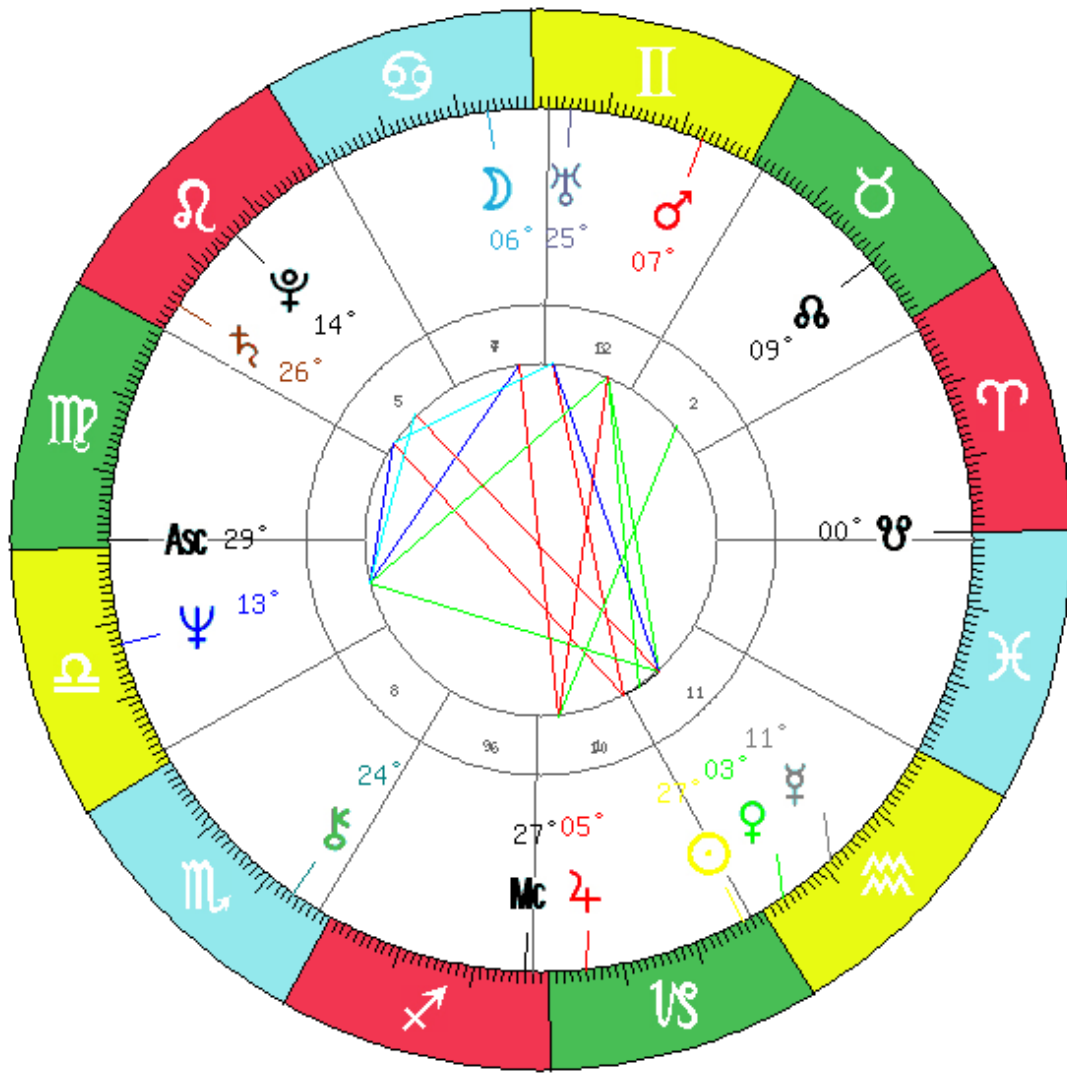
This report is meant more of an introduction to the wonders of astrology rather than a complete course in its intricacies. Further studies, or a consultation with a professional astrologer, are also encouraged to explore this most ancient scientific and philosophic tool.

The information in this report is general in nature and cannot be relied upon as legal or financial advice. You should seek independent legal or financial advice. Esoteric Technologies and its authors disclaim any liability (including for negligence) to any person in respect of the consequences of anything done, or not done, by anyone relying in whole or part upon the information in this report.

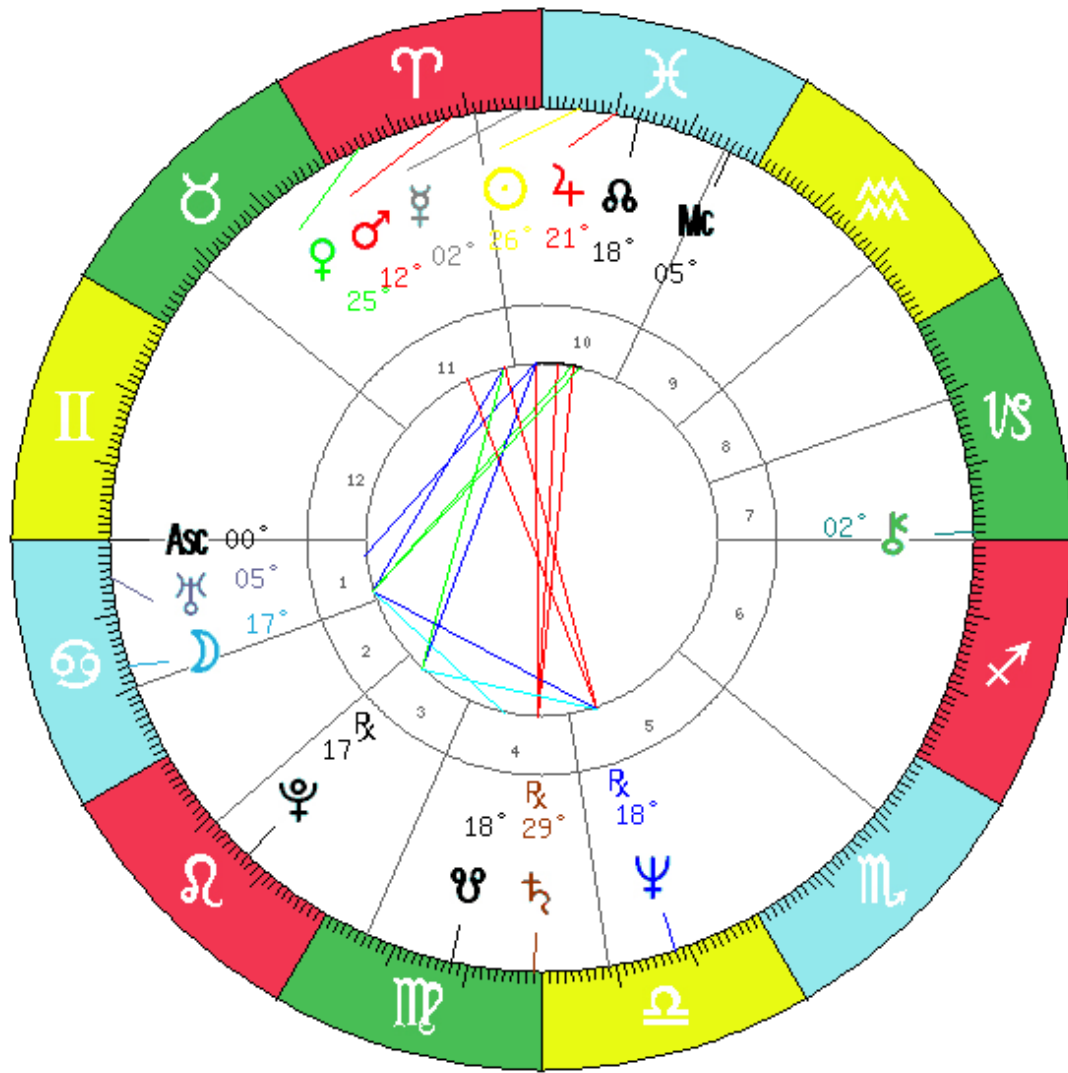
If you would like further information please contact  
Esoteric Technologies Pty Ltd,

PO Box 159, Seaford Vic 3198 Australia. Phone 0488 111 078  
Email: [admin@esotech.com.au](mailto:admin@esotech.com.au)

COMPOSITE CHART OF KURT RUSSELL AND GOLDIE HAWN



KURT RUSSELL 17 MAR 1951 10:42 SPRINGFIELD UNITED STATES 42N06 (LAT) 72W35 (LONG)



GOLDIE HAWN 21 NOV 1945 09:20 WASHINGTON UNITED STATES 38N53 (LAT) 77W02 (LONG)

